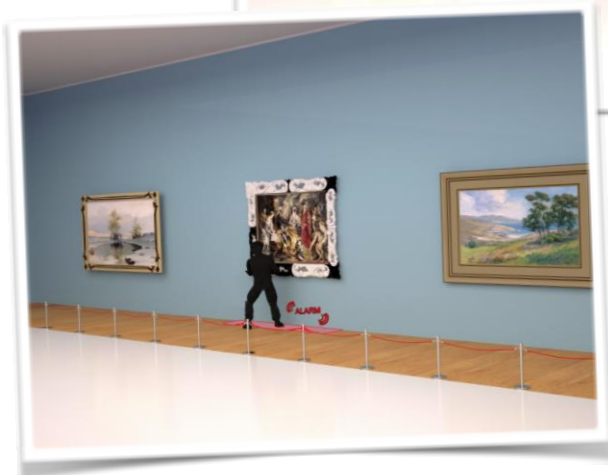
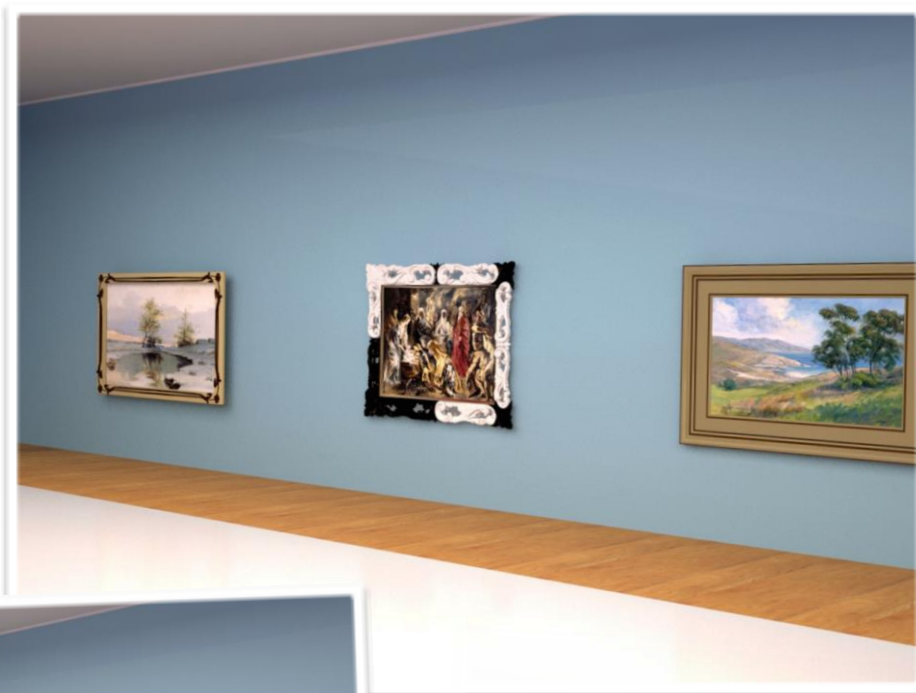


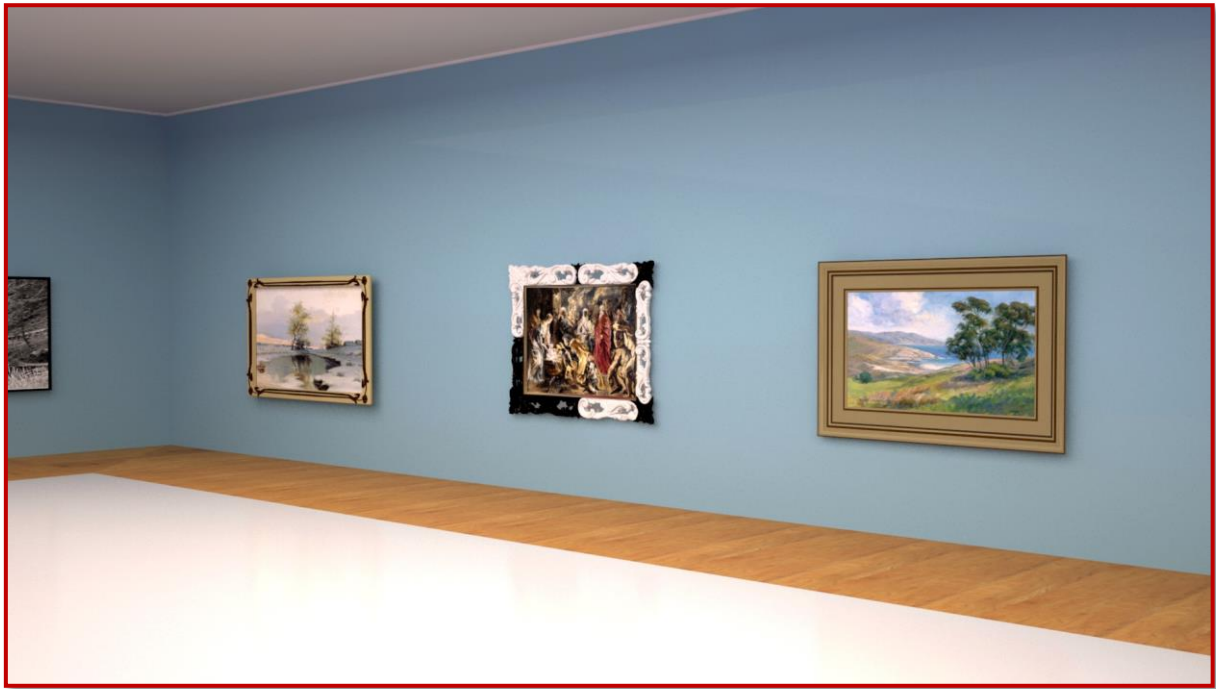
Theft Detection Technology for Museums

D-Fence Security Systems' Application Series



Theft Detection Technology for Museums

D-Fence Security Systems' Application Series



Company Profile

D-Fence is a leading global manufacturer and installer of comprehensive perimeter protection solutions and security systems. Through high innovation and cutting edge technology, D-fence's perimeter security solutions meet the market's growing demand for reliable, state-of-the-art security systems, designed to protect and deter intrusions in sensitive commercial, government, and private installations.

Over a period of 20 years and hundreds of system installations, **D-Fence** has earned its reputation as a trusted partner, with a vast global network of distributors and representatives all over the world. **D-Fence** offers intrusion detection systems and security systems with flexible design options, with an emphasis on unobtrusive, innocent looking electronic fences that blend in their natural environment, and with **ZERO FALSE ALARMS**.

The Theft Detection Technology for Museums

- **Customized**

As the latest application of D-Fence's unique Perimeter Intrusion Detection Technology, the **Theft Detection Technology for Museums** is based on D-Fence's **unique strain gauge sensor**, which can be installed on the four corners of the exhibits as well as the ground/floor surrounding it. The systems work perfectly with any kind of interior decoration (stone, metal, wood, plastic, glass, etc.)

- **Zero False Alarms**

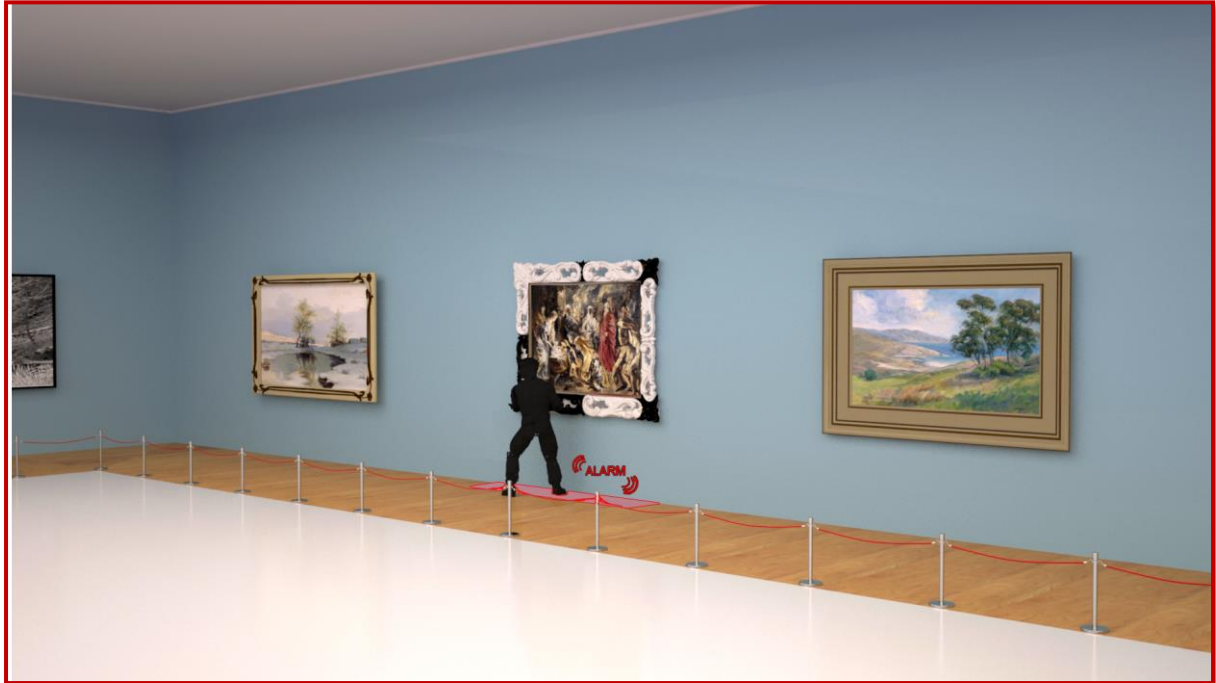
The system provides immediate and accurate detection in any event of an intrusion activating D-Fence's unique Strain Gauge Sensors that are typically set to alert when forces greater than a given threshold are applied to it. This ensures a very low FAR/NAR and also that the system will not be activated by innocent movement nearby, tremors and trembling, changes in temperature or humidity or any other environmental factors.

- **Preemptive**

By installing the D-Pressure Strip System under the floor at restricted areas near the exhibits, as shown in the illustration below, –

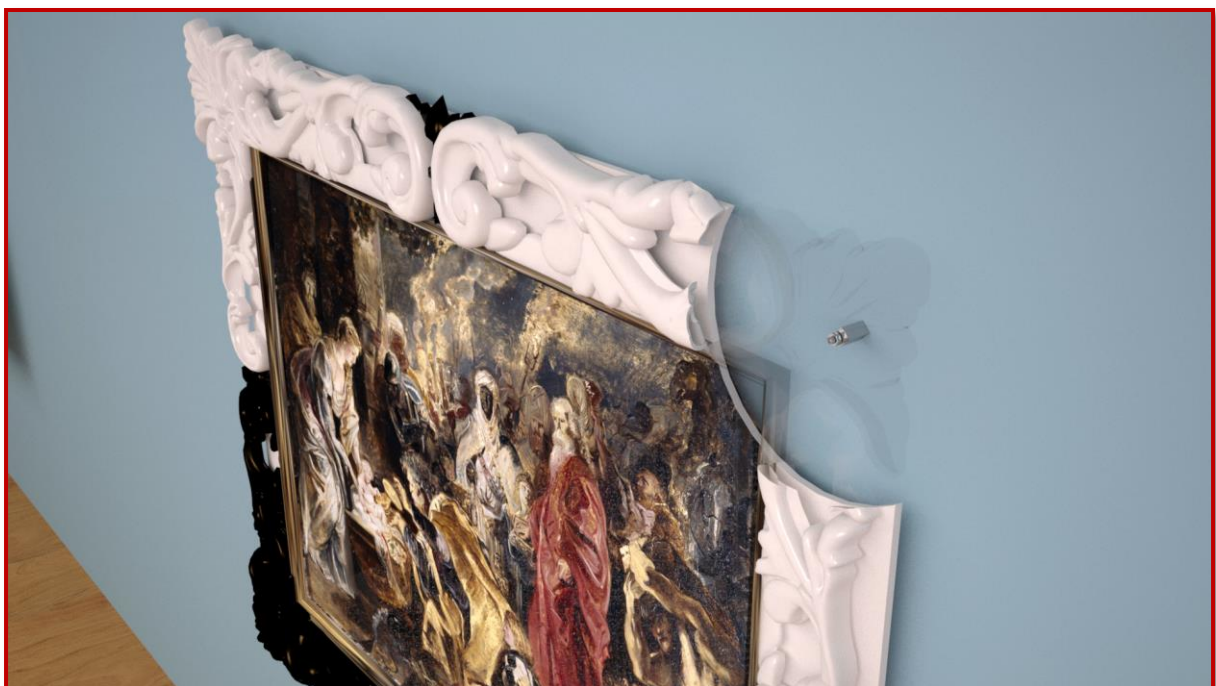


- an alarm will be triggered even before the intruder reaches their target.



- **Sensitive**

By installing D-Fence's unique strain gauge sensors onto the four corners of the exhibit, as shown in the illustration below, –



any intrusion attempt or stealing attempt will trigger an alarm as long as it broke the homeostasis.



- **Invisible**

The Theft Detection System can be installed invisibly without changing the nature of the exhibit or the design of the floor or area to be protected, so it perfectly meets the aesthetic AND security needs of the museum.

